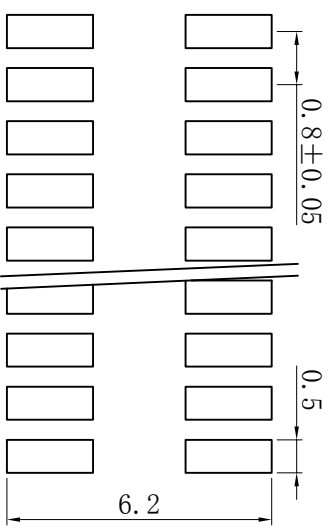
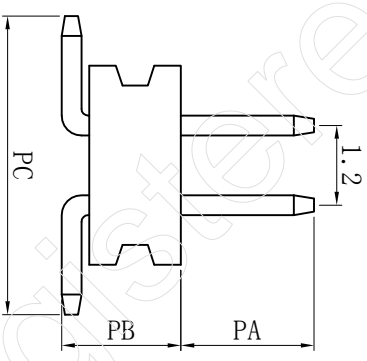
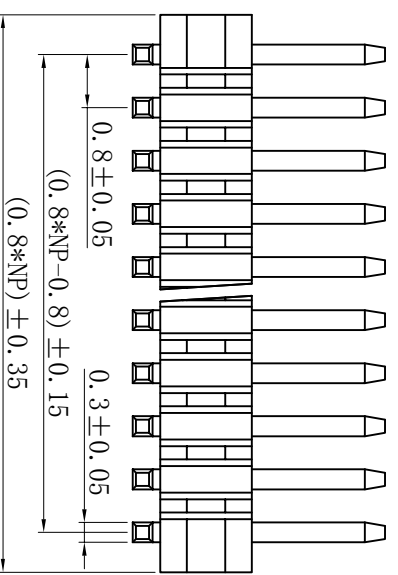
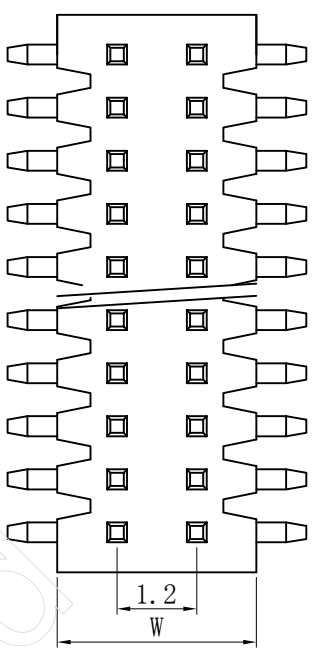


版本 REV	编号 ECN NO.	位置 LOCATIONS	变更内容 DESCR IPTION	日期 DATE	变更人 DESIGN
A0					

- Specifications
- Current Rating: 1Amps
 - Insulation Resistance: 1000 M Ω min.
 - Dielectric withstanding Voltage: AC 500V
 - Contact Resistance: 30 m Ω max.
 - Operating Temperature: -25 $^{\circ}$ C to +85 $^{\circ}$ C
 - Contact Material: Brass
 - Insulation Material: Asfollows
 - Plated: Asfollows



PCB LAYOUT

TOLERANCE UNLESS OTHERWISE SPECIFIED	ANGLES
LINER	
0.0 ± 0.3	0.° ± 2.0°
.00 ± 0.2	.0° ± 1.0°
.000 ± 0.1	.00° ± 0.5°

品名 TITLE:	P100.8*1 SMT 双排排针	图号 (DN):		日期 (Date):	
料号 (P/N):		审核 (CHKD):		日期 (Date):	
厂商 (M/N):		核准 (APPD):		日期 (Date):	
比例 (SCALE):	1:1	张数 (SHEET):	XOFEX	尺寸 (SIZE):	A4
单位 (UNITED):	mm	图例		类别 (TYPE):	

深圳市永连旺电子有限公司